



# Dell Legacy Adapter LD17

User Guide



## Notes, cautions, and warnings

 **NOTE:** A NOTE indicates important information that helps you make better use of your computer.

 **CAUTION:** A CAUTION indicates either potential damage to hardware or loss of data and tells you how to avoid the problem.

 **WARNING:** A WARNING indicates a potential for property damage, personal injury, or death.

© 2016 Dell Inc. All rights reserved. This product is protected by U.S. and international copyright and intellectual property laws. Dell and the Dell logo are trademarks of Dell Inc. in the United States and/or other jurisdictions. All other marks and names mentioned herein may be trademarks of their respective companies.

# Contents

<b>1 Introduction.....</b>	<b>4</b>
<b>2 Package Contents .....</b>	<b>5</b>
<b>3 Hardware Requirements .....</b>	<b>7</b>
<b>4 Identifying Parts and Features .....</b>	<b>8</b>
<b>5 Input/Output (I/O) Connectors.....</b>	<b>10</b>
<b>6 Important Information.....</b>	<b>11</b>
<b>7 Quick Setup of Hardware .....</b>	<b>12</b>
<b>8 Ecosystem – Compatibility list.....</b>	<b>14</b>
<b>9 Technical specifications.....</b>	<b>15</b>
Dell Legacy Adapter LD17 .....	15
<b>10 Frequently Asked Questions.....</b>	<b>17</b>
<b>11 Contacting Dell.....</b>	<b>19</b>

# Introduction

The Dell Legacy Adapter LD17 offers connectivity to devices with serial and parallel ports. It offers existing E-legacy extender users with a future-proof solution to connect their legacy devices.

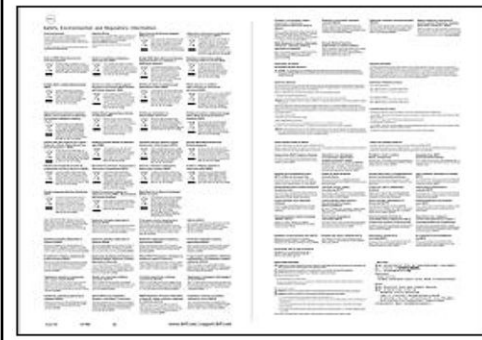
A wide range of connectivity ports are available, which include a parallel port, a serial port, a USB 2.0 port and Gigabit Ethernet port. It is flexible enough to connect to any laptop or desktop with either USB 3.0 or USB Type-C port.

It can be easily connected to legacy devices on-the-go with its lightweight form factor and is certified and recommended with Dell systems.

# Package Contents

Your docking station ships with the components shown below. Ensure that you have received all the components and contact Dell (see your invoice for contact information) if something is missing.

	<p>Dell Legacy Adapter LD17</p>
	<ol style="list-style-type: none"> <li>1 USB Type-B to Type-A cable</li> <li>2 USB Type-B to Type-C cable</li> <li>3 Pendrive (for drivers)</li> </ol>
<div style="display: flex;"> <div style="flex: 1;"> <p><b>Dell Legacy Adapter LD17</b></p> <p>Quick Start Guide</p> <p><b>Important</b></p> <p>You must update your computer's BIOS and the Dell Legacy Adapter drivers to the latest versions available at <a href="http://www.dell.com/support">www.dell.com/support</a> before using the Dock.</p> <p>Older BIOS versions and drivers could result in the Dell Legacy Adapter not being recognized by your computer or not functioning optimally.</p>  </div> <div style="flex: 2;">    </div> </div>	<p>Quick Setup Guide (QSG)</p>



Safety, Environmental,  
and Regulatory  
Information

# Hardware Requirements

Before using the docking station, ensure that your laptop or PC has a USB Type-C port or USB 3.0 port.

# Identifying Parts and Features

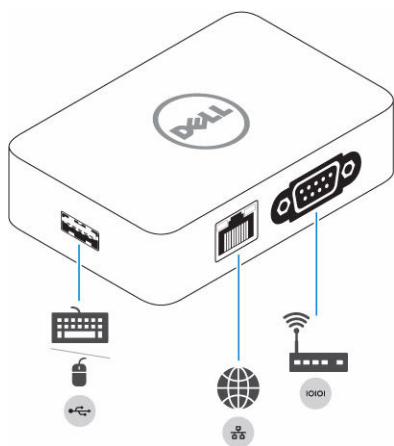


Figure 1. Identifying Parts and Features — Front

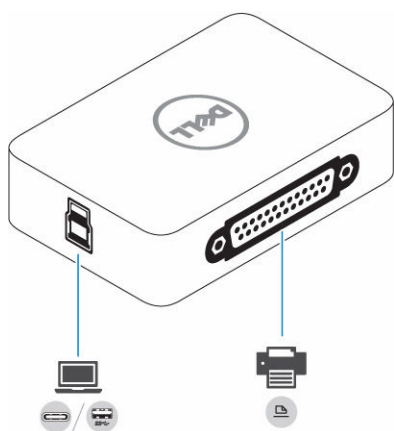
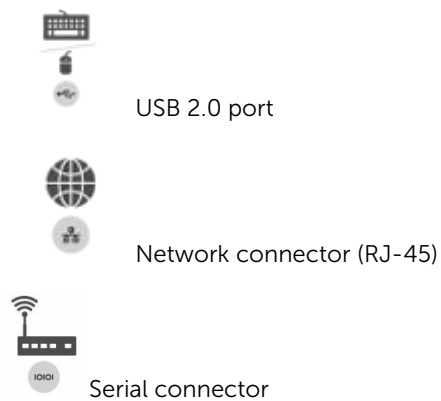


Figure 2. Identifying Parts and Features — Back







USB 3.0 port with PowerShare / USB Type-C



Parallel connector

# Input/Output (I/O) Connectors

The Dell Legacy Adapter LD17 has the below I/O connectors:

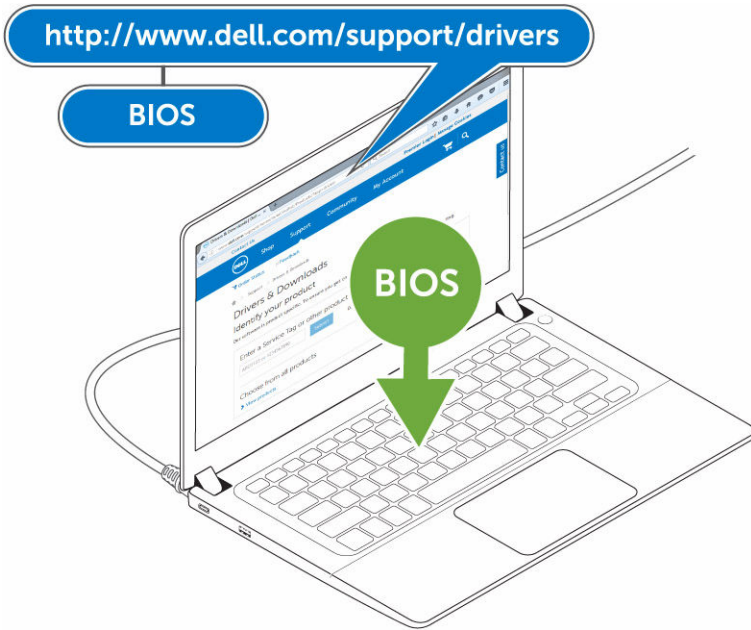
<b>Input/Output Ports</b>	<ul style="list-style-type: none"><li>• USB 2.0 port (Type-A with FullSpeed)</li><li>• USB 3.0 port (Type-B with SuperSpeed)</li><li>• Serial port</li><li>• Parallel port</li><li>• Gigabit Ethernet (RJ-45 connector)</li></ul>
---------------------------	---

## Important Information

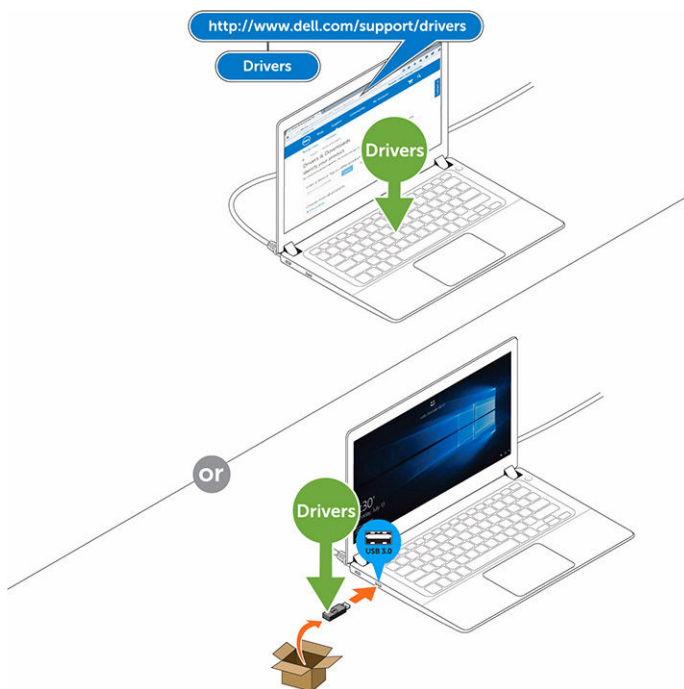
You must update your computer's BIOS and the Dell Legacy Adapter drivers to the latest versions available at [www.dell.com/support](http://www.dell.com/support) before using the docking station. Older BIOS versions and drivers could result in the docking station not being recognized by your computer or not functioning optimally.

# Quick Setup of Hardware

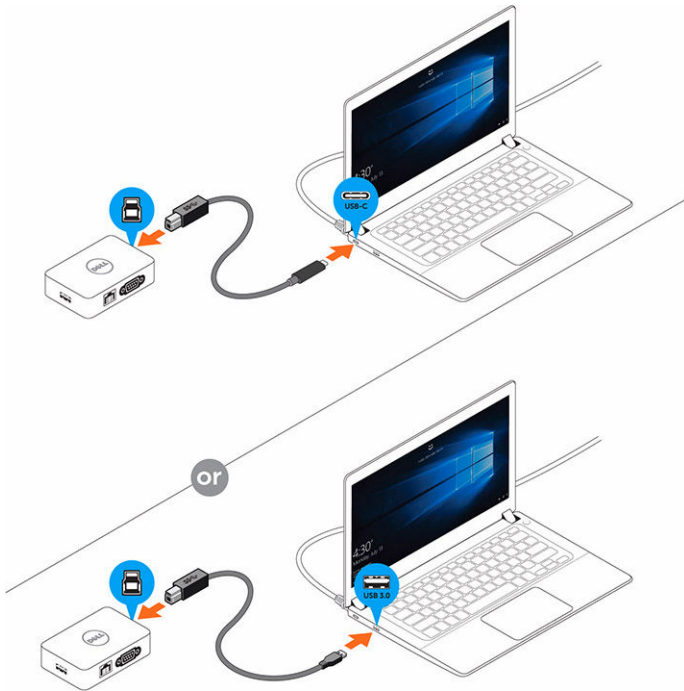
- 1 Update BIOS (Only for Dell Latitude 3460, 3470, 3560, 3570, E7270, and E7470).



- 2 Install the latest Dell Legacy Adapter LD17 drivers from either
  - a The Dell Support site, or
  - b The pendrive shipped with the adapter



- 3 Connect the adapter to the computer using the USB cable with either the Type-C or Type-A connector. Then, plug the USB Type-B connector into the adapter.



- 4 Connect multiple devices to the legacy adapter, as needed.



## Ecosystem – Compatibility list

<b>Dell Latitude</b>	<ul style="list-style-type: none"><li>• 3470</li><li>• 3570</li><li>• E5270</li><li>• E5470</li><li>• E5570</li><li>• 7370</li><li>• E7270</li><li>• E7470</li><li>• 5175</li><li>• 5179</li><li>• 7275</li><li>• 7520</li><li>• 7720</li><li>• 5280</li><li>• 5480</li><li>• 3520</li><li>• 5289</li><li>• 7289</li><li>• 5285</li><li>• 3480</li><li>• 3580</li><li>• 7280</li><li>• 7480</li></ul>
<b>Dell XPS</b>	<ul style="list-style-type: none"><li>• 9550</li><li>• 9560</li><li>• 9360</li></ul>
<b>Dell Precision</b>	<ul style="list-style-type: none"><li>• 5510</li><li>• 3510</li><li>• 7510</li><li>• 7710</li><li>• M5520</li></ul>
<b>Dell Venue</b>	<ul style="list-style-type: none"><li>• 5855</li><li>• 5056</li></ul>

# Technical specifications

## Dell Legacy Adapter LD17

<b>Product name</b>	Dell Legacy Adapter
<b>Model #</b>	LD17
<b>Input port</b>	USB Type-B
<b>Output ports</b>	<ul style="list-style-type: none"> <li>Serial RS232 Port</li> <li>Parallel C36 Port</li> <li>Gigabit Ethernet (RJ-45) with PXE boot support</li> <li>USB 2.0 (Supports up to 1.2 Amps only. Devices requiring more than 1.2 Amps must be connected to laptop's USB port)</li> </ul>
<b>Power source</b>	USB bus powered
<b>Cable connectors</b>	<ul style="list-style-type: none"> <li>1-USB Type-B to Type-C (1 m)</li> <li>1-USB Type-B to Type-A (1 m)</li> </ul>
<b>Color</b>	Black
<b>Dimensions</b>	90 x 60 x 24.2 mm / 3.5 x 2.3 x 0.9 inches
<b>Weight</b>	100 g / 0.22 lb
<b>System requirements</b>	PCs equipped with USB Type-A or USB Type-C port, driver download and installation
<b>Operating systems</b>	Microsoft® Windows® 7, 8, 8.1, 10 (32 / 64 bit) / Linux
<b>Enterprise features</b>	<ul style="list-style-type: none"> <li>Wake on LAN</li> <li>PXE boot</li> <li>MAC address Pass-Through (for select platforms only)</li> </ul>
<b>Box content</b>	Adapter, USB cables (2 x), Documentation, USB pendrive for driver installation
<b>Packaging</b>	Brown box
<b>Warranty</b>	If purchased as a tied laptop accessory, the Dell adapter shares the system warranty. If purchased standalone, 1-year Limited Hardware Warranty Advanced exchange (DAO / APJ). Next business day exchange (EMEA).

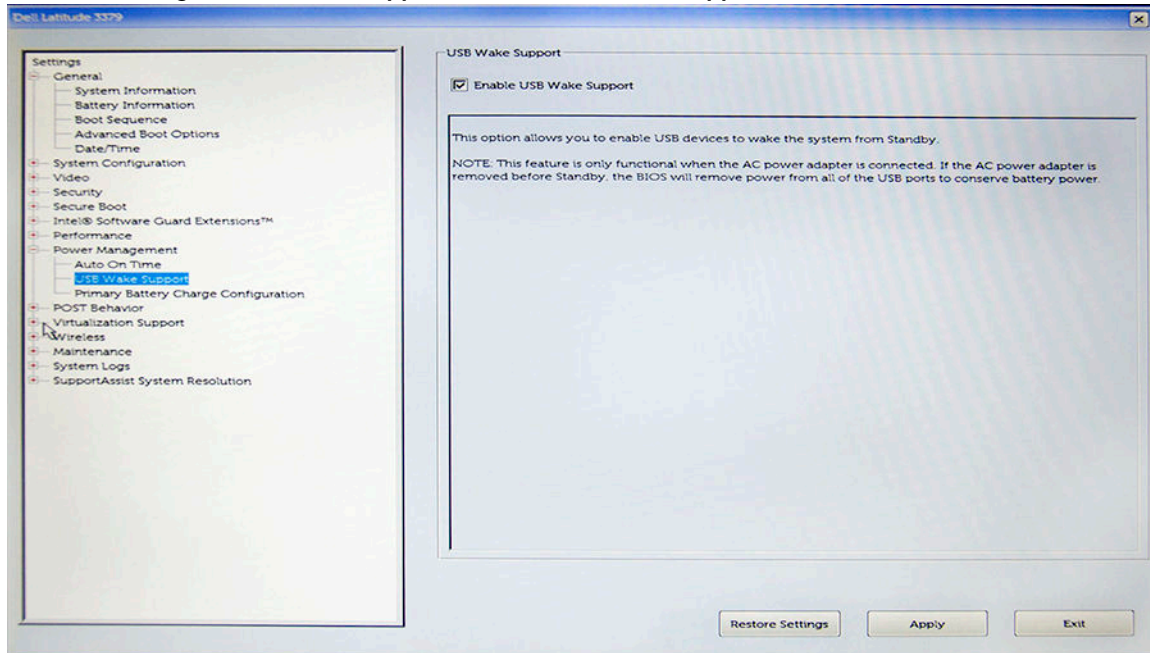




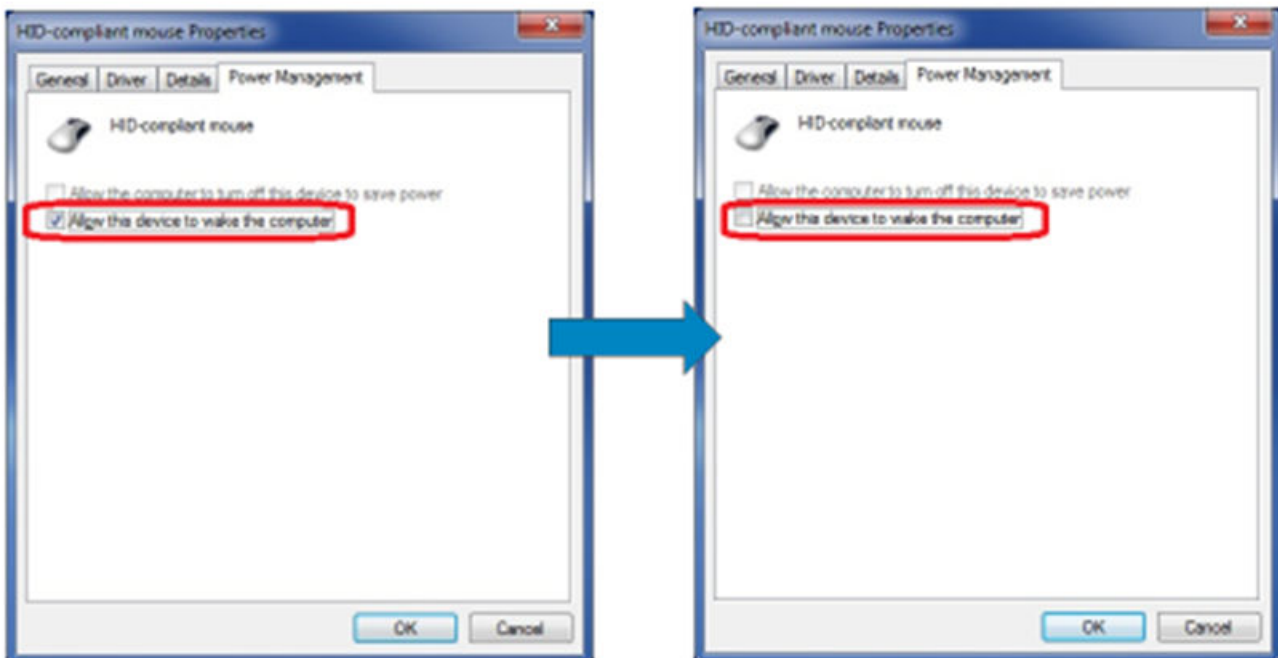
# Frequently Asked Questions

1 How to enable USB wake function:

- In Device Manager > **USB Wake Support** > **Enable USB Wake Support**



- The "Allow the device to wake the computer" option will auto uncheck after resuming from S3 by USB wake.





# Contacting Dell

**NOTE:** If you do not have an active Internet connection, you can find contact information on your purchase invoice, packing slip, bill, or Dell product catalog.

Dell provides several online and telephone-based support and service options. Availability varies by country and product, and some services may not be available in your area. To contact Dell for sales, technical support, or customer service issues:

- 1 Go to **Dell.com/support**.
- 2 Select your support category.
- 3 Verify your country or region in the **Choose a Country/Region** drop-down list at the bottom of the page.
- 4 Select the appropriate service or support link based on your need.